

Robe de Jour

Clair Obscur: Expedition 33

Composed by Lorien Testard

Based on arrangements by Harley Guio and Sebastien Skaf

Arranged for 34-string lever harp by Valfreyja

♩ = 70

A musical score for the song 'The Rose Tree'. The score is written for a piano, with a treble and bass staff. The key signature is one flat (B-flat), and the time signature is 4/4. The melody is in the treble staff, and the bass staff contains a simple accompaniment. The score is divided into four measures. The first measure contains a whole note chord (F4, A4, C5) and a half note chord (F4, A4). The second measure contains a half note chord (F4, A4) and a whole note chord (F4, A4, C5). The third measure contains a half note chord (F4, A4) and a whole note chord (F4, A4, C5). The fourth measure contains a half note chord (F4, A4) and a whole note chord (F4, A4, C5). The score ends with a double bar line.

5

A musical score for the song 'The Rose Tree'. It features a treble and bass staff. The treble staff has a key signature of one flat (Bb) and a time signature of 5/4. The bass staff has a key signature of one flat (Bb) and a time signature of 5/4. The melody in the treble staff consists of a series of eighth and quarter notes. The bass staff provides a harmonic accompaniment with chords and single notes. The score is divided into six measures, with the first measure being a whole rest in the treble and a full accompaniment in the bass. The subsequent measures show the melody and accompaniment working together. The final measure has a 2/4 time signature change.

10

Chorus

19

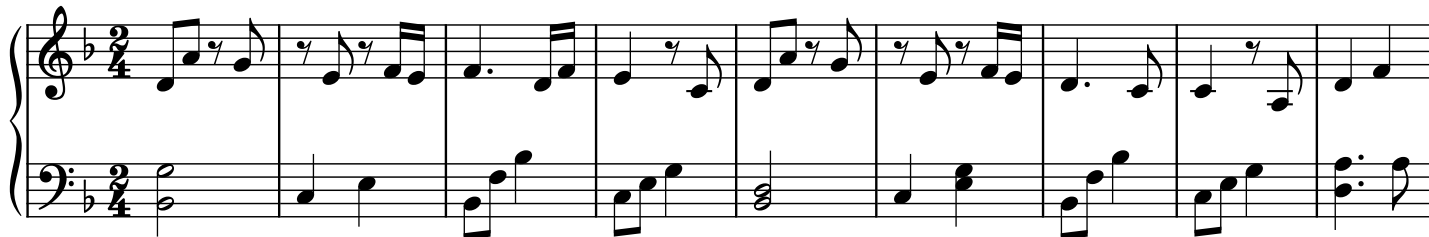
A musical score for the song 'The Rose Tree'. The score is written for piano (p) and features a treble and bass staff. The key signature is one flat (B-flat), and the time signature is 5/4. The melody is in the treble staff, and the accompaniment is in the bass staff. The score includes a repeat sign at the end, indicating a second ending. The lyrics are written below the bass staff.

29

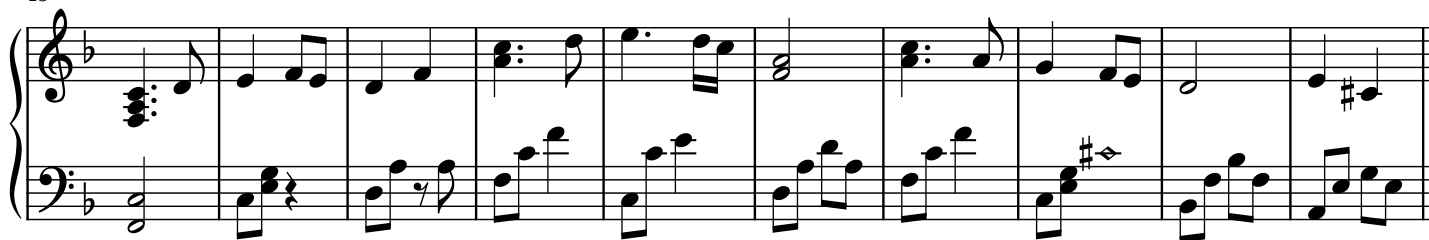
A musical score for the song 'The Rose Tree'. It features a treble and bass staff. The treble staff has a key signature of one flat (Bb) and a time signature of 5/4. The bass staff has a key signature of one flat (Bb) and a time signature of 5/4. The melody is written in the treble staff, and the accompaniment is written in the bass staff. The score consists of six measures, with the first measure being a 5/4 time signature and the subsequent measures being 3/4 time signatures. The melody starts with a quarter note G4, followed by a quarter note A4, a quarter note Bb4, a quarter note G4, and a quarter note F4. The accompaniment starts with a quarter note G3, followed by a quarter note A3, a quarter note Bb3, a quarter note G3, and a quarter note F3. The score ends with a double bar line.

2

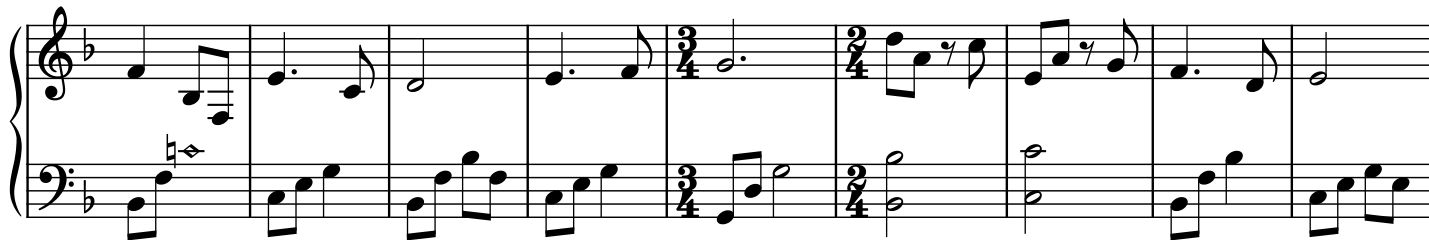
34 Chorus



43



53



62

